



# BOSTON<sup>®</sup> MARATHON JIMMY FUND WALK

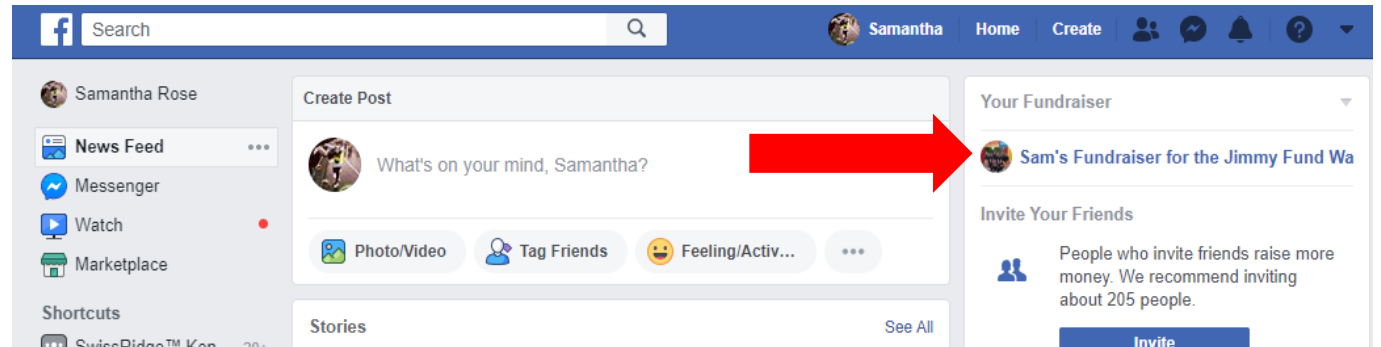
## Go Live on Facebook & Fundraise for the Jimmy Fund Walk

Facebook's 'Live Video' feature is a fun and interactive way to engage with your Facebook friends and raise awareness for your Jimmy Fund Walk fundraising. Follow these easy step-by-step instructions on how to easily fundraise through Facebook Live!

# BOSTON<sup>®</sup> MARATHON **JIMMY FUND WALK**

1. Create a [Facebook Fundraiser](#) through your Participant Center

2. Head over to your Facebook Fundraiser Main Page



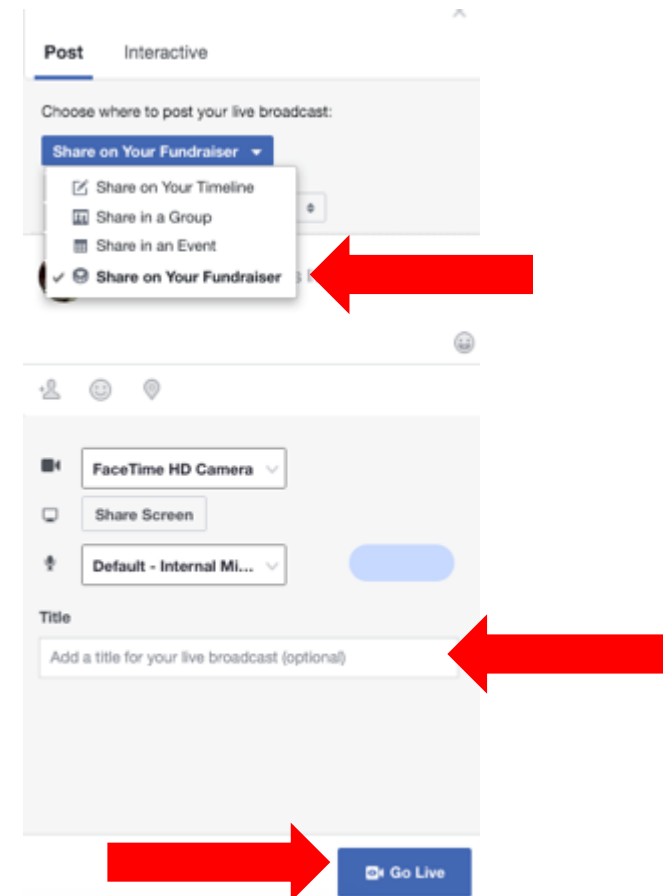
# BOSTON MARATHON **JIMMY FUND WALK**

3. Once at main page of your Facebook Fundraiser you can select the **Live Video** feature



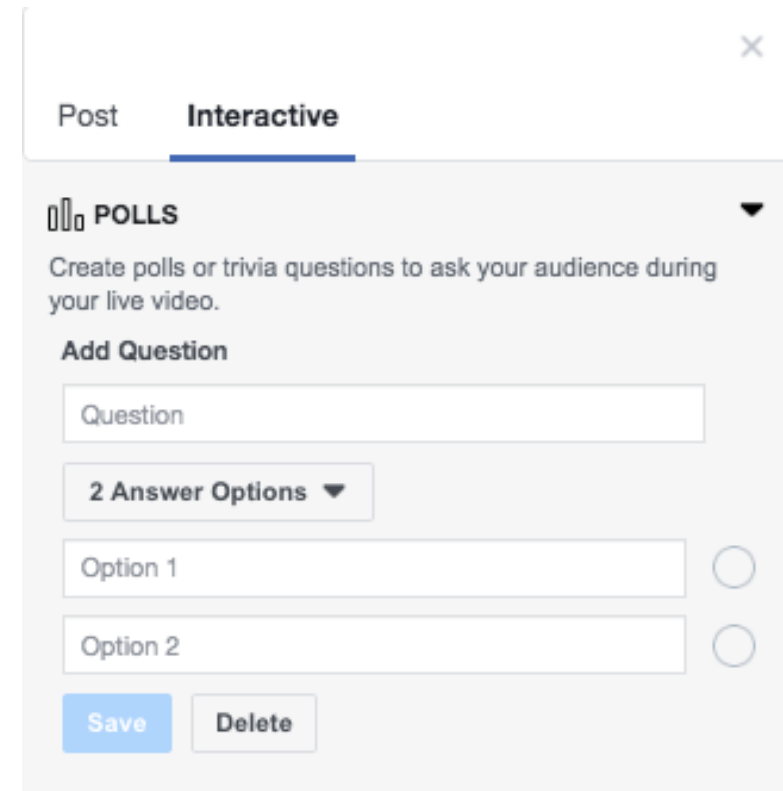
# BOSTON MARATHON JIMMY FUND WALK

4. Before you **Go Live** you have the ability to edit where you would like your broadcast featured, include a blurb about your live video and create a title. Once you're done you can go and select **Go Live**.



# BOSTON<sup>®</sup> MARATHON **JIMMY FUND WALK**

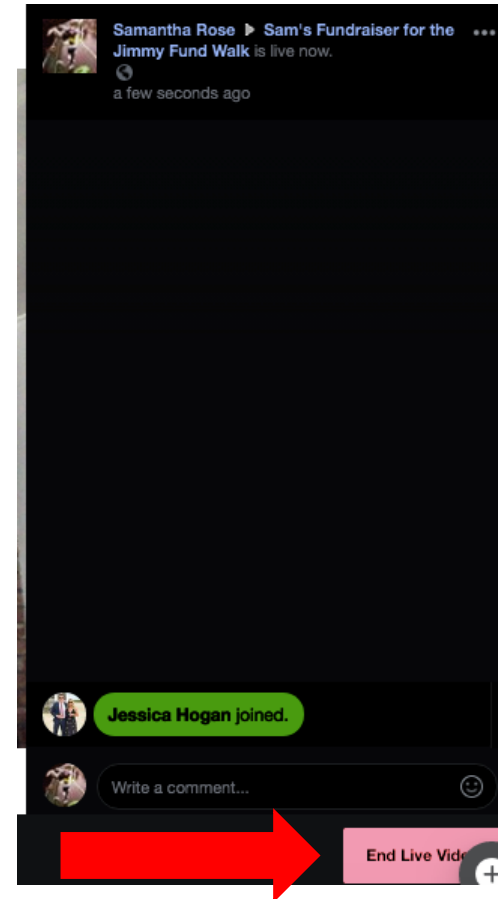
5. There is also an **Interactive** feature which you can include poll questions and have attendees choose an answer



The screenshot shows a control panel for a live video broadcast. At the top, there are two tabs: "Post" and "Interactive", with "Interactive" being the active tab. Below the tabs, there is a section titled "POLLS" with a dropdown arrow. Underneath, it says "Create polls or trivia questions to ask your audience during your live video." and "Add Question". There is a text input field for the "Question". Below that is a dropdown menu set to "2 Answer Options". There are two more text input fields for "Option 1" and "Option 2", each with a radio button to its right. At the bottom of the form, there are two buttons: "Save" (in blue) and "Delete".

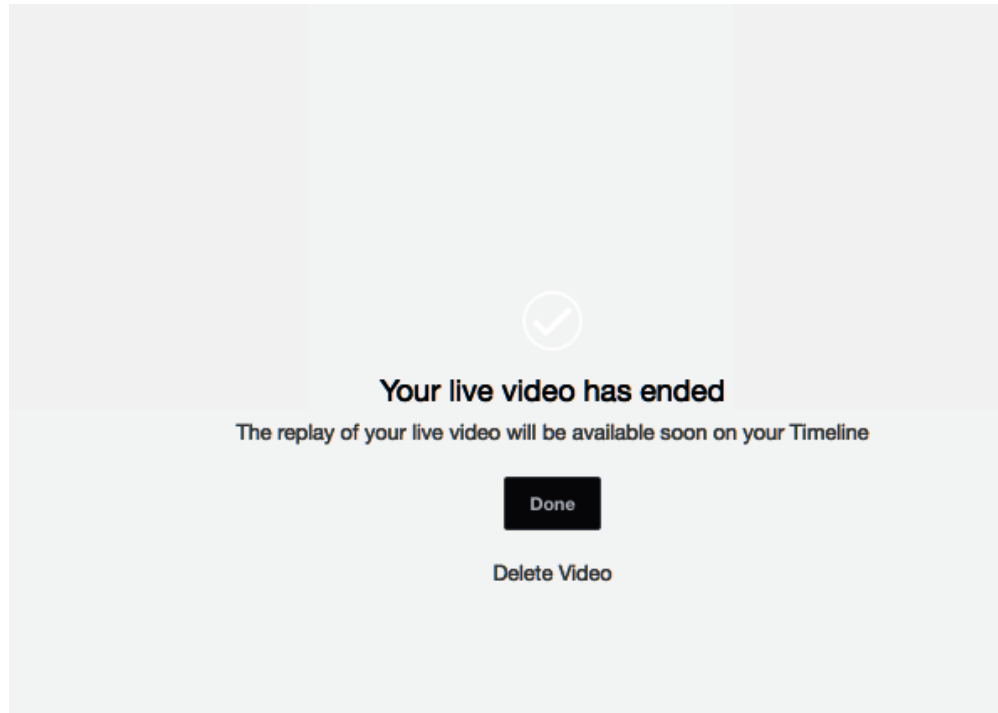
# BOSTON MARATHON® JIMMY FUND WALK

6. Once you are officially **Live**, you have ability to see who has joined and can interact with them through the chat function. Once you are done with your **Live video**, you can select **End Live Video**.



# BOSTON<sup>®</sup> MARATHON **JIMMY FUND WALK**

7. After you hit **End Live Video**, there will be prompt in which you can save the Live Video which will then be added to your timeline or you can select to delete the video.





# BOSTON<sup>®</sup> MARATHON JIMMY FUND WALK

**Questions? Contact [JimmyFundWalk@dfci.harvard.edu](mailto:JimmyFundWalk@dfci.harvard.edu)**



**Dana-Farber**  
Cancer Institute



**The**  
**Jimmy Fund**