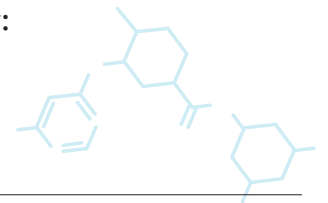


# Your Impact in Action



Because of your support, we have accomplished great things at Dana-Farber Cancer Institute, in just the last year:



## Research

SAVING LIVES THROUGH DISCOVERY

### Curative Potential for CLL

Dana-Farber introduced a novel combination therapy for chronic lymphocytic leukemia (CLL) that resulted in many patients under 65 achieving undetected minimal residual disease after two years of treatment, suggesting curative potential for a broad patient population.

### Early Detection for Ovarian Cancer

Ovarian cancer is notoriously difficult to detect early. But in a recent breakthrough, researchers identified 34 new genes associated with an increased risk for developing earliest-stage ovarian cancer, laying the groundwork for new approaches that could halt cancer before it advances.

### Preventing Pancreatic Cancer

Dana-Farber researchers have discovered a rare inherited gene mutation that dramatically raises the lifetime risk of pancreatic and other cancers. This discovery could lead to routine testing of people with a family history of pancreatic cancer to detect the disease at an earlier, more treatable stage.

### New Hope for a Pediatric Cancer

Effective treatments for renal medullary carcinoma, a rare and deadly pediatric kidney tumor, have eluded doctors for years. But a recent Dana-Farber study offers hope: researchers have discovered a key vulnerability that can be exploited by an existing drug used for treating other cancers in adults.

### Immunotherapy for Glioblastoma

For the first time ever, Dana-Farber researchers provoked an immune response against glioblastoma by using a personalized 'neoantigen' vaccine that trains a patient's own immune cells to attack the tumor. This discovery provides hope to patients fighting a disease that has, until now, evaded immunotherapy.

### Reducing Disparities

A Dana-Farber study revealed that black men diagnosed with prostate cancer classified as low risk may in fact have a more aggressive form of the disease that is more likely to be fatal than in non-black men. This finding sets the stage for further research into the possible causes of this disparity.



# Your Impact in Action



## Patient Care

### PREVENTION, DETECTION, AND TREATMENT

#### Making Transplant History

Dana-Farber made history by performing the first outpatient stem cell transplant in New England. Our new ambulatory transplant center is designed to reduce or even eliminate hospital stays for patients receiving reduced-intensity conditioning.

#### Increasing Access to Care

Committed to bringing high quality care to patients closer to where they live, Dana-Farber added Cape Cod Hospital and Maine-based New England Cancer Specialists to the Dana-Farber Cancer Care Collaborative in 2019, and launched a collaboration in Brazil to help develop a network of five comprehensive cancer centers across that country.

#### Caring for the 'App' Generation

Young adult patients face special challenges—cancer can disrupt education, career, family planning, or parenting of young children. To address the emotional burden of these issues, Dana-Farber developed “iaya,” a smartphone app that provides these patients with coping exercises and a digital space to connect with peers.

#### Emergency Care

Cancer patients often experience symptoms that require urgent evaluation. To help patients avoid unnecessary trips to the emergency room, Dana-Farber opened the Acute Care Clinic, an extension of the Yawkey Center for Cancer Care that provides urgent care from specialists who understand the unique needs of our cancer patients.

#### Responding to Patient Needs

In response to the alarming increase in colon and rectal cancer among patients under 50, Dana-Farber established the Young-Onset Colorectal Cancer Center, one of the first in the country dedicated to this distinct patient population.



## Honors

### RECOGNITION AND RANKINGS

#### 2019 Nobel Prize in Medicine

Dana-Farber researcher William G. Kaelin Jr., MD, received a 2019 Nobel Prize in Medicine for discoveries of how cells sense and adapt to oxygen availability. These findings have already led to important medical applications, including new cancer therapies.

#### Top in New England, Top 5 Nationwide

Dana-Farber Cancer Institute has been the top ranked cancer hospital in New England by U.S. News and World Report for 19 consecutive years, and is ranked in the top 5 nationally for both adult and pediatric cancer programs.

#### NCI Outstanding Investigators

In 2019, six Dana-Farber researchers were named Outstanding Investigators by the National Cancer Institute. This recognition gives the Institute a total of 15 such awards, the most of any single institution.

#### Nursing Excellence

Dana-Farber was awarded Magnet® status by the American Nurses Credentialing Center for the fourth consecutive time. This prestigious designation recognizes excellence in nursing practice and health care delivery and is awarded to only 8 percent of hospitals in the U.S.

**“Your generosity enables us to keep pushing boundaries to improve the lives of our patients. Thank you for helping us move closer to a world without cancer.”**

**Laurie H. Glimcher, MD**  
President and CEO  
Dana-Farber Cancer Institute  
**Richard and Susan Smith Professor of Medicine**  
Harvard Medical School



Find out more: [Dana-Farber.org](http://Dana-Farber.org) | [JimmyFund.org](http://JimmyFund.org)